

SBMR AB-MR Test: General Information

- 50 cases, approx. half normal/half abnormal
- Sequences include:
 - Pre (fat sup)
 - Post (fat sup)
 - Subtraction
 - T2 (with or without Fat sup)
 - Static MIP (using MIP button on the upper right)
- Report BI-RADS separately for each breast
- Focus only on findings that are unique to the BPE
- Use the interpretation algorithms for foci, masses and NME to assist in categorizing findings
- You cannot skip ahead but you may go back to completed cases to change your answers
- When you have completed all 50 cases, you can score your test
- If you do not pass, you can return to change your answers and re-score your test as many times until you pass

Test Progress is Saved

- You do not have to complete the test in a single session. If logout, your progress will be saved and you can return to the test multiple times until it is complete
- If you do not pass, you can return to change your answers and re-score your test as many times until you pass

Returning users: Login



The image shows a login form on a grey background. At the top left, the word "Login" is written in a bold, black serif font. Below it is a horizontal line. The form contains three main sections: "User name" with a text input field, "Password" with a text input field, and "Remember me" with an unchecked checkbox. Below the checkbox is a "Login" button. At the bottom, there are two links: "Lost password" and "Register", both underlined. A blue arrow points from the top text to the horizontal line, and another blue arrow points from the bottom text to the "Register" link.

Login

User name
Enter your user name

Password
Enter your password

Remember me
Keeps login for 2 weeks

[Lost password](#) | [Register](#)

New user registration

New User Registration

- New users, enter your registration info
- All radiologists reading AB-MR studies for the trial must have their own login and certification
- Record your user name and password
- If you log out before completing the test your progress will be saved. Log back in to continue where you left off. There is no time limit to the test

Registration

Please complete the following information to register.

Register using a user name and password:

User name
Enter your user name

Choose Password
Choose a password

Repeat password
Re-enter your password

Email address
Enter your email address

First name:
First Name

Last name:
Last Name

Site affiliation:
Name of site used for study registration

Layout

Case List



Sub

T2

MIP Button



The screenshot displays a medical imaging software interface with a 2x2 grid of breast MRI scans. The top row is labeled 'Sub' and 'T2', and the bottom row is labeled 'Pre' and 'Post'. The top-left scan is 'Dynamic Subtraction (fat sat)', the top-right is 'T2 (no fat sat)', the bottom-left is 'Dynamic Precontrast (fat sat)', and the bottom-right is 'Dynamic Postcontrast (fat sat)'. On the left, a 'Case List' shows cases 1 through 31, all checked. On the right, a 'MIP Button' labeled 'Show MIP' is visible. Below it are 'Right Breast Rating' and 'Left Breast Rating' sections, each with radio buttons for BI-RADS 1-2, 3, and 4-5. A 'submit' button is located below the ratings. At the bottom of the interface are 'Reset Hanging', 'Help', and 'Logout' buttons.

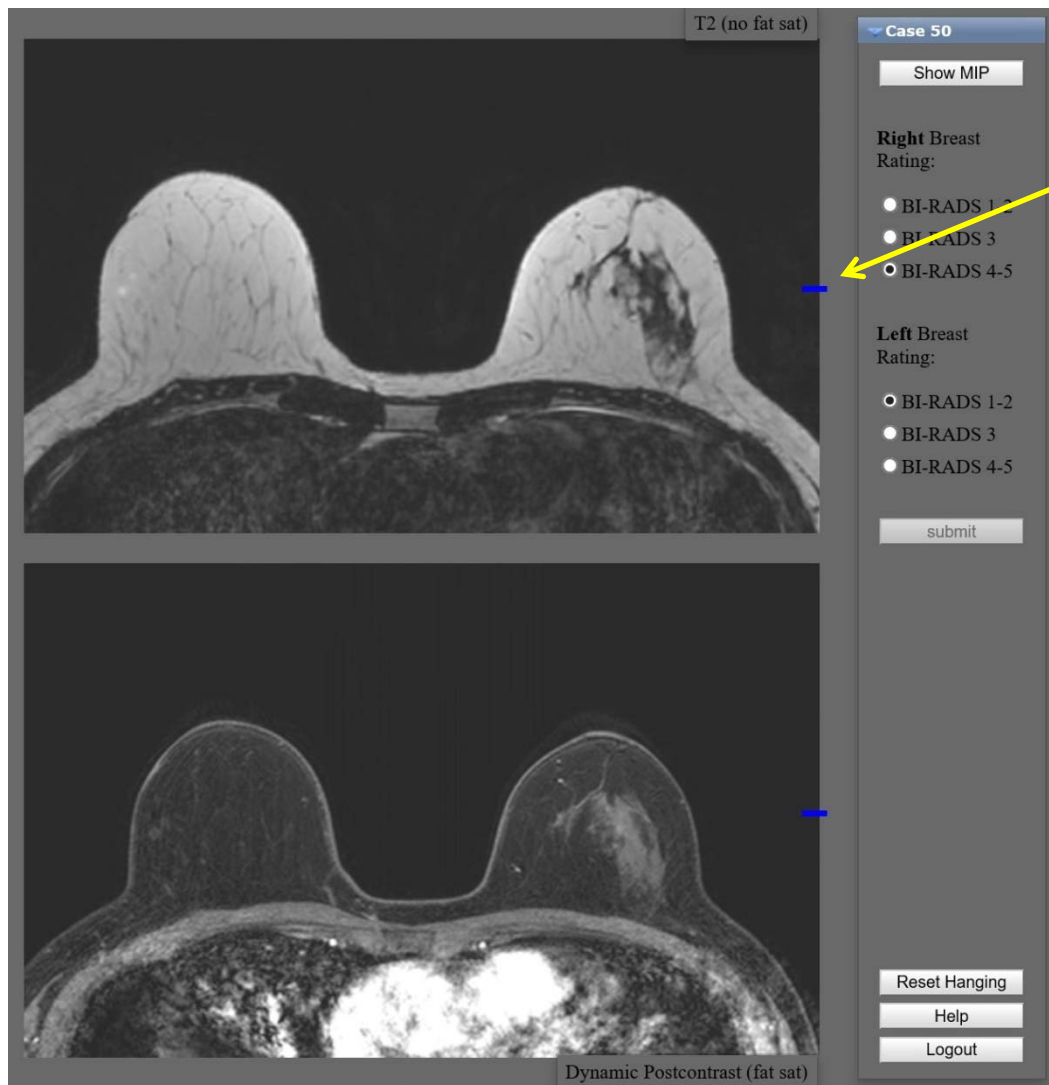
Pre

Post

Keys and Functions

- Use the scroll bar on the right of the image or the mouse wheel to scroll thru the images
- Double-clicking on an image will enlarge the image. Double-click again to return to normal.
- The + and - keys will zoom in and out (you do not have to press shift, = is ok)
- Hold the left mouse button will pan the image when zoomed in.
- The right mouse button will adjust the brightness and contrast (window width and level).
- Use the reset button on the lower right to reset to the default hanging

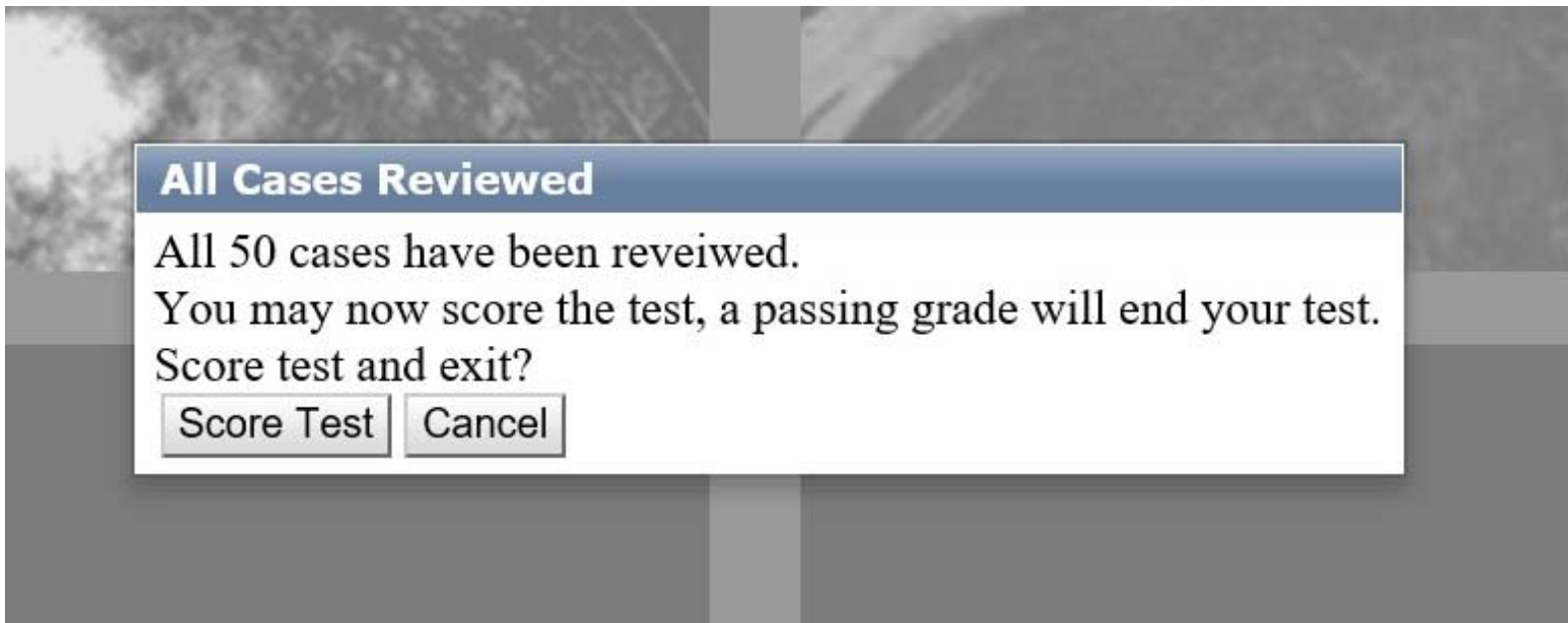
Functions



Scroll Bar
or Mouse
wheel to
scroll

Reset to
default
Hanging

When you have answered all 50 cases,
score your test



**If you do not pass, you can return to change your answers
and re-score your test as many times until you pass**

Record your test confirmation number

